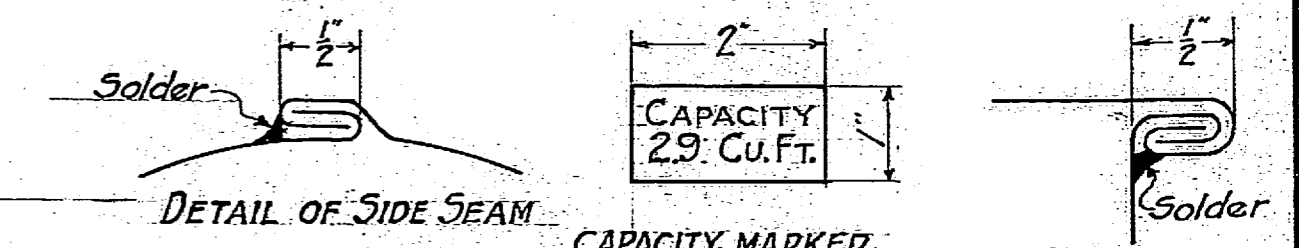


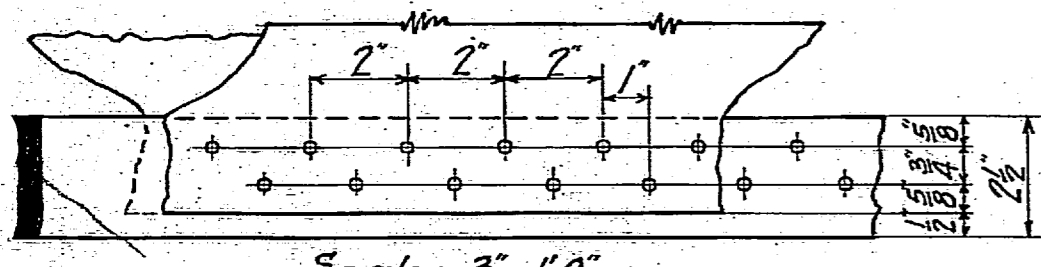
AIR TANK - 14" x 33" INSIDE DIMENSIONS.
 No 23 U.S.S.G. GALV'D.
 Capacity: 2.9 cu. feet each.
 All seams securely hook jointed and soldered.



10 AIR TANKS REQUIRED PER BOAT
 Test to one pound pressure.

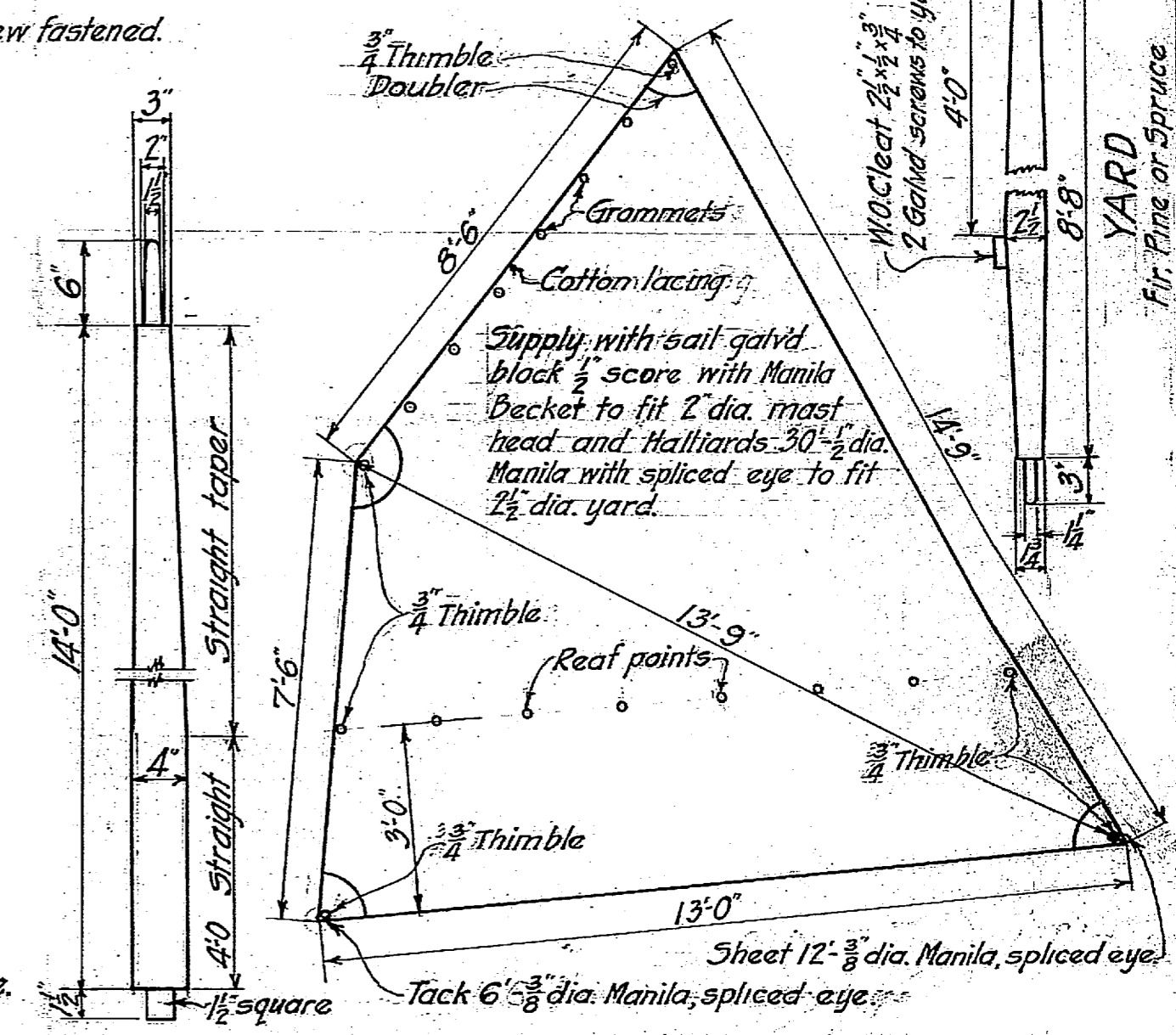
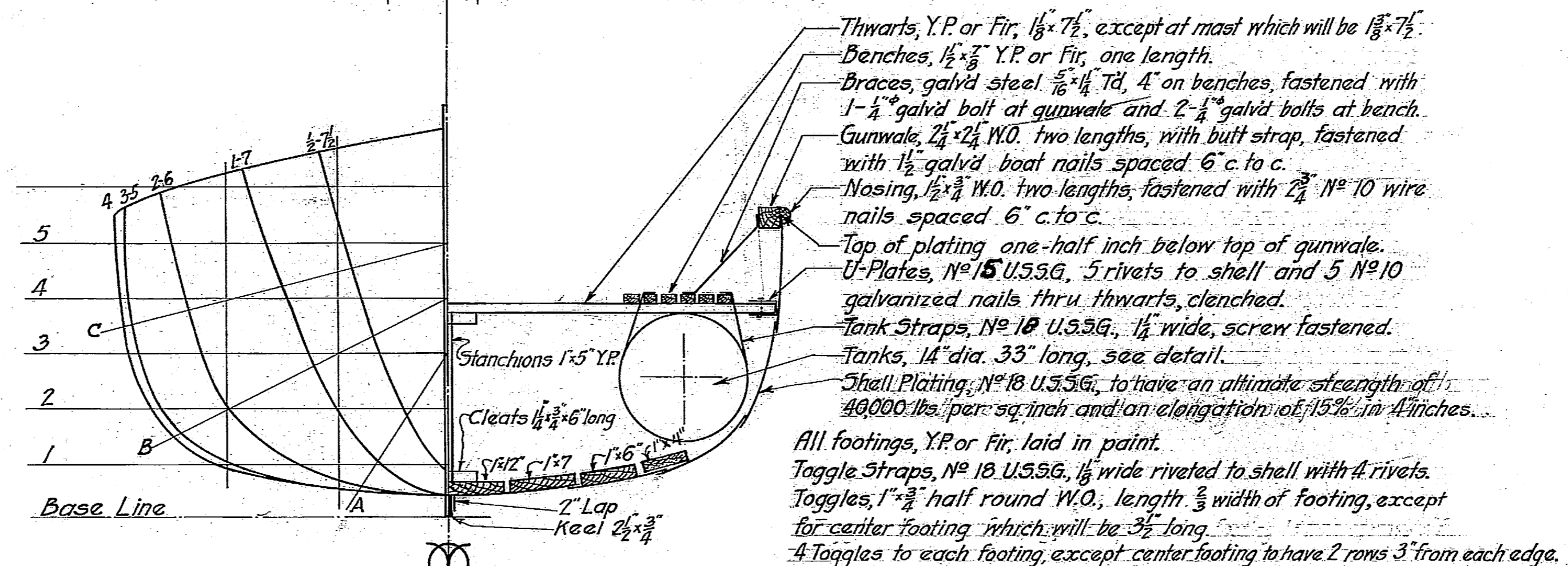
DETAIL OF SHELL RIVETING, SEAMS & BUTTS.

Rivets, No 9 B.W.G. galv'd ctsk Head.
 One Thread Caulking Cotton laid in red lead paint between rows of rivets.
 Both surfaces lapping to be covered with red lead.



DETAIL OF KEEL, STEM & STERN POST.

Riveting: Rivets 3/8" dia. Galvanized Button Head.
 One Thread of Caulking Cotton laid in lead paint between rows of rivets.
 Keel painted 2 coats red lead and oil.



MAST ONE SAIL REQUIRED PER BOAT.

FITTINGS REQUIRED
 Life Lines, 3/8" dia. manila festooned in 3 bights, seine float in each bight.
 Oarlock horns and chains - 7 Oarlock sockets.
 Painter, 40' - 7 1/4" circumference manila.
 8-10" and 1-14" Ash oars.

LENGTH MEASUREMENT	20'-0"
BREADTH	6'-0"
DEPTH	2'-6"
CUBIC CAPACITY	180 CU. FT.
AIR TANK CAPACITY	29 CU. FT.

